

Thank you for participating in the GLOBE at Night (GaN) citizen science project! Observations will be collected from March 16 – 28, 2009. During that time, observers all over the world will be measuring the amount of light pollution in their neighborhoods. Light pollution wastes energy, disrupts the behavior of animals, and can create unsafe situations.

In the meantime, it never hurts to practice your observing skills and make sure you are ready to join in. Here's what to do:

1. Find the darkest area where the most stars are visible between 8-10pm.
2. Wait 10 minutes for your eyes to adapt to the dark.
3. Locate the constellation Orion, which you can recognize from the three stars that make his belt. If you need help you can find out more about how to locate Orion here: [http://www.globe.gov/globeatnight/observe\\_finder.html](http://www.globe.gov/globeatnight/observe_finder.html)
4. Compare your view of Orion with the star charts on the next page, or on the GLOBE at Night website: [http://www.globe.gov/globeatnight/observe\\_magnitude.html](http://www.globe.gov/globeatnight/observe_magnitude.html)
5. Record the number of the chart that best matches your view of Orion. This will determine the magnitude of the faintest stars that you can see at your location. The lower the number, the brighter the stars (which means you can't see anything fainter). You can find more information about the magnitude of stars here: <http://www.globe.gov/GaN/learn.html>
6. If possible, try making these observations at a few different locations. For example: How does the middle of the city compare to a country road? What difference does it make if you move a few yards toward or away from a streetlight? Can you find the darkest and brightest locations in your neighborhood?
7. If it is between March 16 – 28, 2009, report your observations on the GaN website: <http://www.globe.gov/GaN/report.html>  
It only takes a minute!
8. Be sure to come back after all of the observations have happened and check out the global Sky Brightness Map: <http://www.globe.gov/GaN>

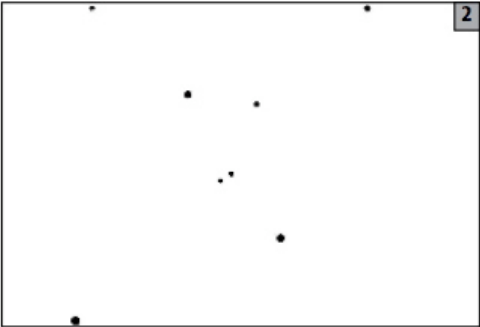
# Magnitude Charts



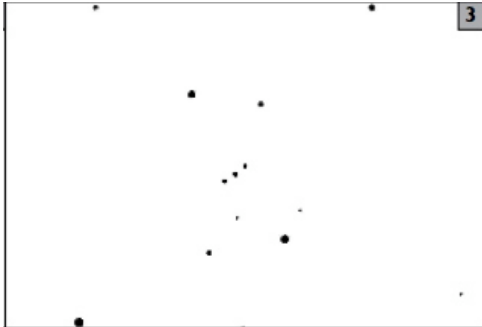
Cloudy sky



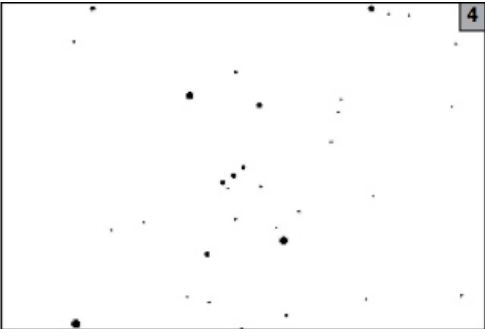
Mag. 1 – A couple of bright stars



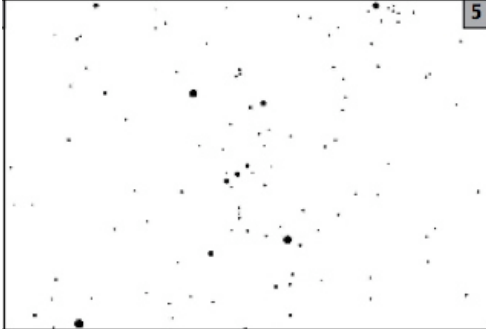
Mag. 2 – Two stars in belt



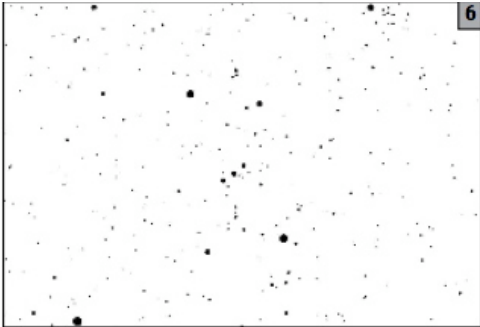
Mag. 3 – Three stars in belt



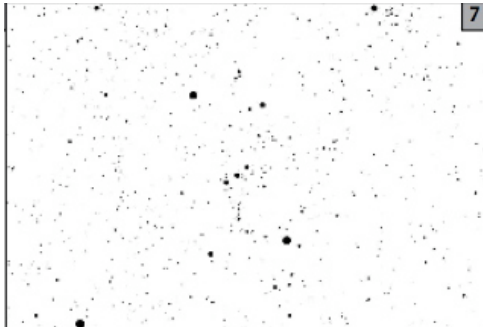
Mag. 4 – Four stars in belt



Mag. 5 – Six stars in belt, faint sword



Mag. 6 – Many stars in belt, clear sword



Mag. 7 – Too many to count!